



SMA Series Motor Bases

■ Material: Steel

■ Finish: Galvanization

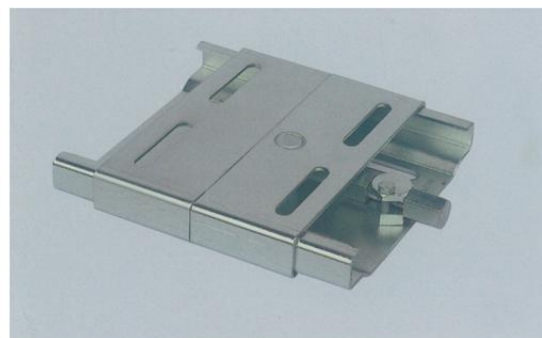
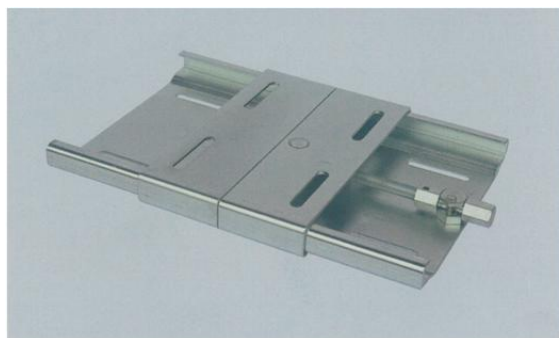
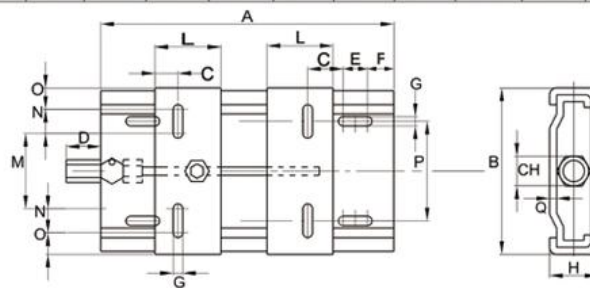
■ Part No.: SMA210B, SMA210, SMA270, SMA307, SMA340, SMA380, SMA430, SMA450, SMA490

■ Features:

With split plates sliding & Convenient for bolts fixing of motors

Compact Structure & Beautiful Appearance

TYPE	A	B	C	CH	D	E	F	G	H	L	M	N	O	P	Q	kg
SMA210B	210	150	20	19	30	25	25	10	27	65	50	25	25	80	2.5	1.8
SMA210	210	195	20	19	25	50	25	10.5	33	70	43	50	26	98	3	2.6
SMA270	270	195	20	19	25	50	25	10.5	33	70	43	50	26	98	3	3.0
SMA307	307	213	20	19	25	50	25	10.5	33	70	65	50	24	108	3	3.2
SMA340	340	290	27	22	30	62	30	12.5	40	95	90	62	38	165	4	6.3
SMA380	380	240	27	19	25	43	30	12	33	95	96	43	29	160	3	4.5
SMA430	430	290	27	22	30	62	30	12.5	40	95	90	62	38	165	4	7.5
SMA450	450	350	40	22	30	55	30	15	40	125	174	55	33	225	4	9.7
SMA490	490	410	40	22	30	60	30	15	40	95	193	60	48.5	284	4	10.8





MP Series Motor Bases

■ Material: Steel

■ Finish: Galvanization

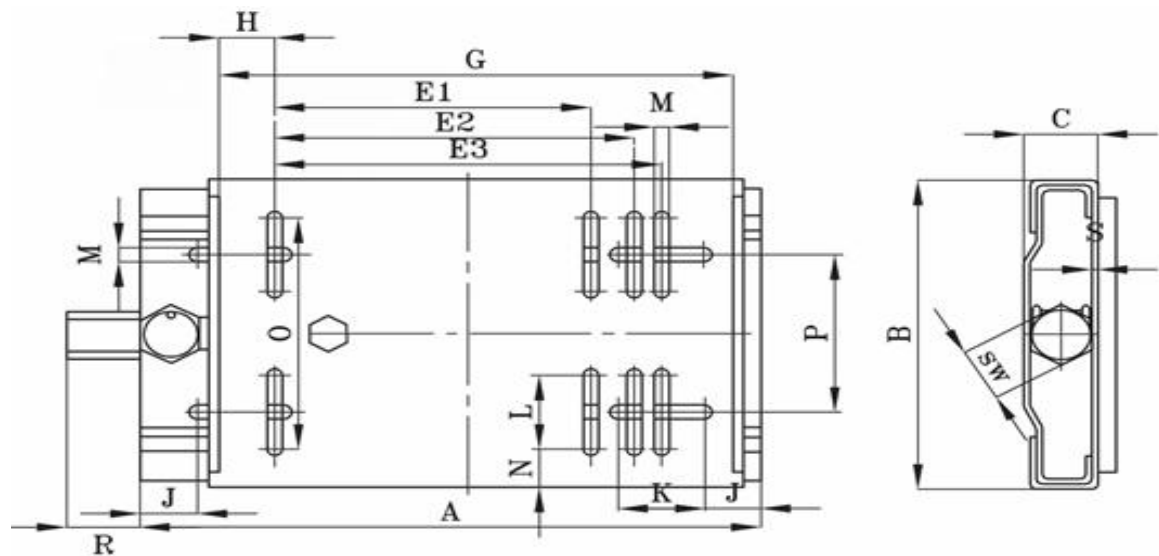
■ Part No.: 270-63/90-MP, 307-90/112-MP, 340-100/132-2-MP, 430-100/132-2-MP, 430-160/180-2-MP, 490-160/180-MP, 490-180/200-MP, 585-200/225-MP, 600-250-MP, 735-280-MP, 800-315-MP

■ Features:

With mono-plate sliding & Convenient for bolts fixing of motors

Compact Structure & Beautiful Appearance

Monoplate-MP	Motor Installation size	A	B	C	E1	E2	E3	G	H	J	K	L	M	N	O	P	R	SW	S	Weight kg
270-63/90-MP	63-71-80-90	270	195	33	100	125	140	190	25	25	50	50	10.5	31.5	132	98	25	19	3	3.1
307-90/112-MP	90-100-112	307	213	33	140	160	190	255	32.5	25	50	50	10.5	25.5	162	108	25	19	3	4.1
340-100/132-2-MP	100-112-132	340	290	40	160	190	216	286	35	30	62	47.5	12.5	37.5	215	165	30	22	4	7.9
430-100/132-2-MP	100-112-132	430	290	40	160	190	216	286	35	30	62	47.5	12.5	37.5	215	165	30	22	4	8.9
430-160/180-2-MP	160-180	430	370	40		254	279	379	50	30	62	62	12.5	41.5	287	248	30	22	4	12
490-160/180-MP	160-180	490	370	40		254	279	379	50	30	62	62	12.5	41.5	287	248	30	22	4	12.7
490-180/200-MP	180-200	490	410	40		279	318	420	50	30	60	52	17	40.5	329	285	30	22	4	14.6
585-200/225-MP	200-225	585	450	50		318	356	468	56	30	60	52	17	49	352	300	30	22	5	23.7
600-250-MP	250	600	470	65			406	515	54.5	30	60	60	22	50.5	369	320	35	27	5	28.1
735-280-MP	280	735	570	65			457	585	64	30	70	70	22	55	460	420	35	27	5	38.2
800-315-MP	315	800	760	80			508	653	72.5	30	80	80	28		560	520	35	27	5	





MB Series Motor Bases

■ Material: Steel

■ Finish: Powder Coating

■ Part No.:

56, 66, 143, 145, 182, 184, 213, 215

254B2, 256B2, 284B2, 286B2, 324B2, 326B2, 364B2, 365B2, 404B2, 405B2, 444B2, 445B2, 447B2,

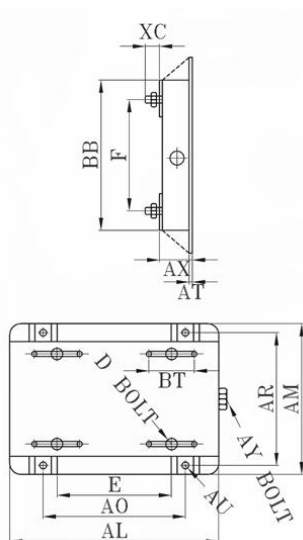
449B2

■ Features:

More convenient for fixing and adjustment

Compact Structure & Beautiful Appearance

TYPE	AL	AM	AX	BB	E	F	AO	AR	AU	BT	AT	XC	D BOLT	AY BOLT	APPROX WT. (LBS)
56	10-5/8	6-1/2	1-1/8	4-1/2	2-7/16	1-1/2	3-13/16	2-7/8	3/8	3	078	7/8	5/16*1	3/8*4	3
66	12	8-1/2	1-1/8	6-1/2	3-1/8	2-1/2	4-1/2	3-7/8	3/8	3	078	7/8	5/16*1	3/8*4	4
143	10-1/2	7-1/2	1-1/8	5-1/2	2-3/4	2	3-3/4	3-3/8	3/8	3	119	13/16	5/16*1	3/8*4	5
145	10-1/2	8-1/2	1-1/8	6-1/2	2-3/4	2-1/2	3-3/4	3-7/8	3/8	3	119	13/16	5/16*1	3/8*4	6
182	12-3/4	9-1/2	1-1/2	6-1/2	3-3/4	2-1/4	4-1/2	4-1/4	1/2	3	134	1-1/4	3/8*1-1/2	1/2*6	9
184	12-3/4	10-1/2	1-1/2	7-1/2	3-3/4	2-3/4	4-1/2	4-3/4	1/2	3	134	1-1/4	3/8*1-1/2	1/2*6	9-1/2
213	15	11	1-3/4	7-1/2	4-1/4	2-3/4	5-1/4	4-3/4	1/2	3-1/2	164	1-1/4	3/8*1-1/2	1/2*6	13-1/2
215	15	12-1/2	1-3/4	9	4-1/4	3-1/2	5-1/4	5-1/2	1/2	3-1/2	164	1-1/4	3/8*1-1/2	1/2*6	15-1/2

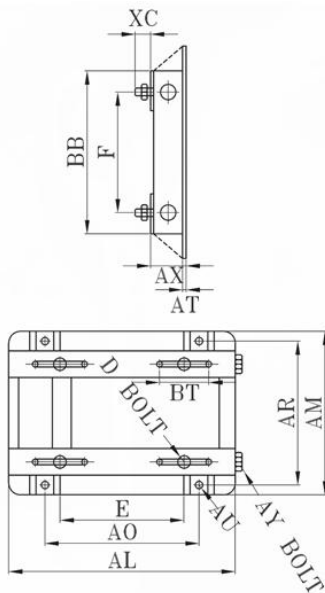


SINGLE ADJUSTMENT SLIDE BASES



B2 TYPE

TYPE	AL	AM	AX	BB	E	F	AO	AR	AU	BT	AT	XC	D BOLT	AY BOLT	APPROXWT. (LBS)
254B2	17-3/4	15-1/8	2	10-3/4	5	4-1/8	6-1/4	6-5/8	5/8	4	3/16	1-3/8	1/2*1-3/4	5/8*9	17
256B2	17-3/4	16-7/8	2	12-1/2	5	5	6-1/4	7-1/2	5/8	4	3/16	1-3/8	1/2*1-3/4	5/8*9	18
284B2	19-3/4	16-7/8	2	12-1/2	5-1/2	4-3/4	7	7-1/2	5/8	4-1/2	3/16	1-5/8	1/2*2	5/8*9	21
286B2	19-3/4	18-3/8	2	14	5-1/2	5-1/2	7	8-1/4	5/8	4-1/2	3/16	1-5/8	1/2*2	5/8*9	22
324B2	22-3/4	19-1/4	2-1/2	14	6-1/4	5-1/4	8	8-1/2	3/4	5-1/4	3/16	2-1/8	5/8*2-1/2	3/4*9	30
326B2	22-3/4	20-3/4	2-1/2	15-1/2	6-1/4	6	8	9-1/4	3/4	5-1/4	3/16	2-1/8	5/8*2-1/2	3/4*9	31
364B2	25-1/2	20-1/2	2-1/2	15-1/2	7	5-5/8	9	9-1/8	3/4	6	1/4	2	5/8*2-1/2	3/4*11	45
365B2	25-1/2	21-1/2	2-1/2	16-1/2	7	6-1/8	9	9-5/8	3/4	6	1/4	2	5/8*2-1/2	3/4*11	46
404B2	28-3/4	22-3/8	3	16-1/2	8	6-1/8	10	9-7/8	7/8	7	1/4	2-9/16	3/4*3	3/4*14	55
405B2	28-3/4	23-7/8	3	18	8	6-7/8	10	10-5/8	7/8	7	1/4	2-9/16	3/4*3	3/4*14	56
444B2	31-1/4	24-5/8	3	19-1/4	9	7-1/4	11	11	7/8	7-1/2	5/16	2-1/2	3/4*3	3/4*14	74
445B2	31-1/4	26-5/8	3	21-1/4	9	8-1/4	11	12	7/8	7-1/2	5/16	2-1/2	3/4*3	3/4*14	75
447B2	31-1/4	30-1/8	3	24-3/4	9	10	11	13-3/4	7/8	7-1/2	5/16	2-1/2	3/4*3	3/4*14	89
449B2	31-1/4	35-1/8	3	29-3/4	9	12-1/2	11	16-1/4	7/8	7-1/2	5/16	2-1/2	3/4*3	3/4*14	95



DOUBLE ADJUSTMENT SLIDE BASES



Rails

■ Material: Steel

■ Finish: Galvanization

■ Features:

Unique Design & Convenient Installation

Compact Structure & Beautiful Apperance

Type	Slide length G1	Motor-type	M*h	e*s	G2	a	b	b/2	Φd	B	H1	H2	GW(kg)
312/6	240	63/71	M6*19	75*6	262	16	280	-	12	40	28	30	1.4
312/8	240	80/90	M8*27	75*6	262	16	280	-	12	40	28	30	1.5
375/6	305	63/71	M6*19	75*6	325	16	343	-	12	40	28	30	1.5
375/8	305	80/90	M8*27	75*6	325	16	343	-	12	40	28	30	1.6
375/10	305	100/112	M10*32	75*6	325	16	343	-	12	40	28	30	1.6
395/8	302	80/90	M16*28	97*8	325	20	355	-	12	50	40	43	3.4
395/10	302	100/112	M10*35	97*8	425	20	355	-	12	50	40	43	3.4
495/8	405	80/90	M8*29	97*8	425	20	456	-	12	50	40	43	4.0
495/10	405	100/112/132	M10*35	97*8	425	20	455	-	12	50	40	43	4.0
495/12	405	160	M12*49	97*8	425	20	455	-	12	50	40	43	4.0
530/10	413	132	M10*37	119*9	442	25	480	-	14	60	50	54	6.4
530/12	413	160	M12*49	119*9	442	25	480	-	14	60	50	54	6.4
630/10	515	132	M10*37	119*9	542	25	580	-	14	60	50	54	8.2
630/12	515	160/180	M12*45	119*9	542	25	580	-	14	60	50	54	8.2
686/12	538	160/180	M12*43	154*12	575	28	630	315	18	75	60	64	12.8
686/16	538	200/225	M16*62	154*12	575	28	630	315	18	75	60	64	12.8
864/16	700	200/225	M16*60	300*16	810	32	800	400	24	90	75	-	16.6
864/20	700	250/280	M20*68	300*16	810	32	800	400	24	90	75	-	16.6
1072/20	865	250/280	M20*77	360*19	995	36	1000	500	30	112	100	-	33.4
1072/24	865	315	M24*88	360*19	995	36	1000	500	30	112	100	-	33.5
1330/24	1065	315/355	M24*95	430*21	1215	40	1250	625	30	130	125	-	56.6

