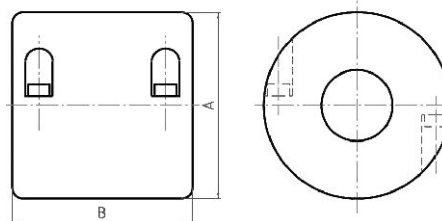
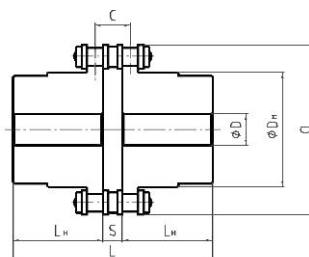
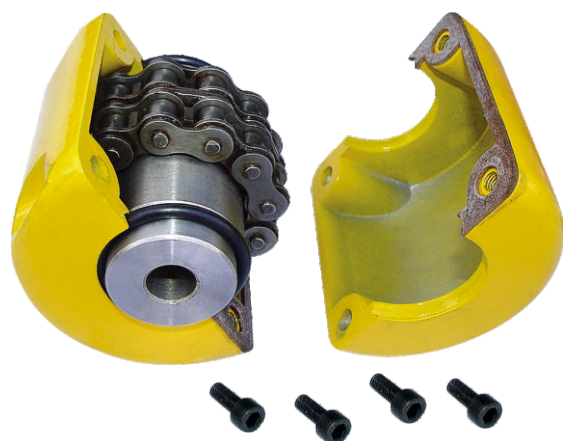


Roller Chain Couplings

The chain coupling, composed of two-strand roller chains and two sprockets, features simple and compact structure, and high flexibility, power transmission capability and durability. What's more, the chain coupling allows simple connection/disconnection, and the use of the housing enhances safety and durability.

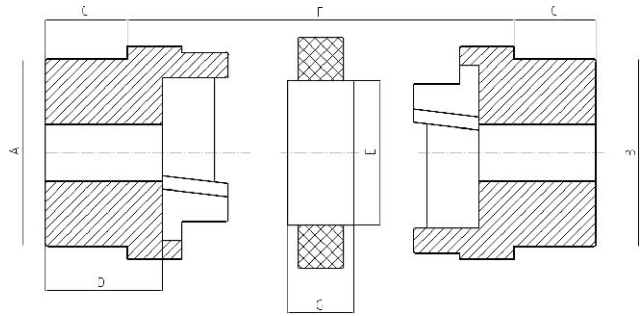


Coupling number	Chain pitch	Coupling										Casing		
		Drill hole	Shaft diam.		O	L	D _H	L _H	S	C	Approx weight kg/m	A	B	Approx weight kg/m
			Min.	Max.										
3012	9.525	12	13.5	16	45	65	27.2	29.5	6.0	10.1	0.31	69	63	0.22
4012	12.70	12	14	22	62	79.4	36	36	7.4	14.4	0.73	77	72	0.30
4014		12	14	28	69	79.4	45	36			0.31			
4016		13.5	16	32	77	87.4	51.5	40			0.35			
5014	15.875	14.5	17	35	86	99.7	56	45	9.7	18.1	2.15	101	85	0.47
5016		14.5	18	40	96	99.7	64	45			0.50			
5018		16	18	45	106	99.7	73.5	45			0.60			
6018	19.05	20	22	56	127	123.5	89.5	56	11.5	22.8	6.55	147	105	1.2
6020		20	24	60	139	123.5	102.5	56			1.2			
6022		20	28	71	151	123.5	116	56			1.2			
8018	20.40	20	32	80	169	141.2	115	63	15.2	29.3	13.2	190	129	1.9
8020		20	36	90	185	145.2	125	65			2.5			
8022		20	40	100	202	157.2	142	71			2.7			
10020	31.75	25	45	110	233	178.8	162	80	18.8	35.8	32.4	281	153	4.1
12018	38.10	35	50	125	256	202.7	173	90	22.7	45.4	43.2	307	181	5.2
12022		35	56	140	304	222.7	213	100			6.7			



GOODWILL

HRC Flexible Coupling



FLANGE-CAST IRON

INSERT-RUBBER

HRC-standard straight bore series(lengthen type)

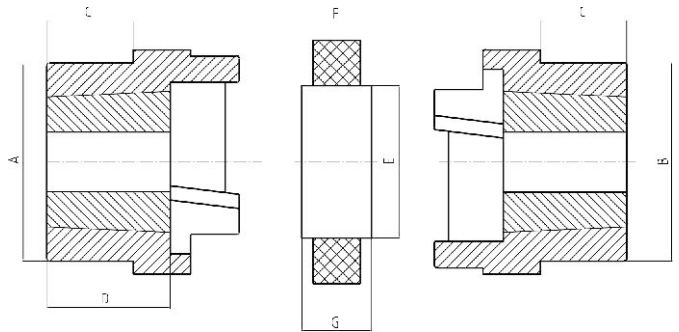
TYPE	MAX BORE		DIMENSIONS								MASS KG
	MM	INS	A	B	E	F	G	C	D	L	
70	32	1 1/4	69	60	31	25	18	20.0	23.5	65	
90	42	1 5/8	85	70	32	30.5	22.5	26.0	30.0	82.5	
110	55	2 1/8	112	100	45	45	29	37.0	45.0	119.0	
130	60	2 3/8	130	105	50	53	36	47.0	55.5	147.0	
150	70	2 3/4	150	115	62	60	40	50.0	60.0	160.0	
180	80	3 1/8	180	125	77	73	49	58.0	70.0	189.0	
230	100	4"	225	155	99	85.5	59.5	77.0	90.0	239.5	
280	130	5"	275	206	119	105.5	74.5	90.0	105.5	285.5	

HRC-standard straight bore series

TYPE	MAX BORE		DIMENSIONS								MASS KG
	MM	INS	A	B	E	F	G	C	D	L	
70	32	1 1/4	69	60	31	25	18	20.0	23.5	65	
90	42	1 5/8	85	70	32	30.5	22.5	19.5	23.5	69.5	
110	55	2 1/8	112	100	45	45	29	18.5	26.5	82	
130	60	2 3/8	130	105	50	53	36	18.0	26.5	89	
150	70	2 3/4	150	115	62	60	40	23.5	33.5	107	
180	80	3 1/8	180	125	77	73	49	34.5	46.5	142	
230	100	4"	225	155	99	85.5	59.5	39.5	52.5	164.5	
280	130	5"	275	206	119	105.5	74.5	51.0	66.5	207.5	

Flexible Coupling

HRC Flexible Coupling



FLANGE-CAST IRON

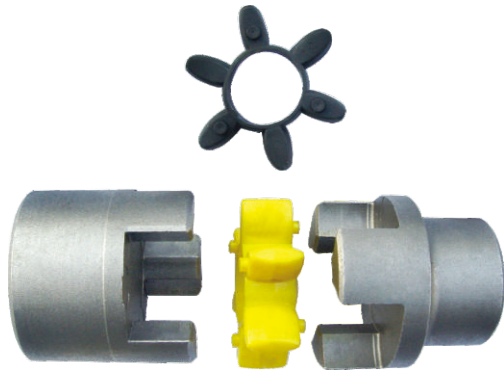
INSERT-RUBBER

HRC-Taper bore universal series

BTL

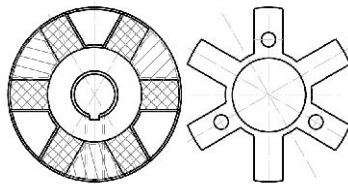
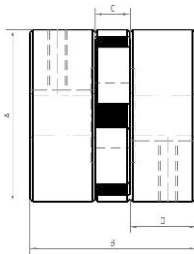
TYPE	BUSH	MAX BORE		DIMENSIONS									MASS KG
		MM	INS	A	B	E	F	G	C	D	J	L	
70	1008	25	1	69	60	31	25	18	20.0	23.5	29	65	1.00
90	1108	28	1.18	85	70	32	30.5	22.5	19.5	23.5	29	69.5	1.78
110	1610	42	1.58	112	100	45	45	29	18.5	26.5	38	82	5.00
130	1610	42	1.58	130	105	50	53	36	18.0	26.5	38	89	5.46
150	2012	50	2	150	115	62	60	40	23.5	33.5	42	107	7.11
180	2517	60	2.12	180	125	77	73	49	34.5	46.5	48	142	16.6
230	3020	75	3	225	155	99	85.5	59.5	39.5	52.5	55	164.5	26.0
280	3525	100	4	275	206	119	105.5	74.5	51.0	66.5	67	207.5	50.0

J-the wrench clearance required for tightening and loosening the bush on the shaft.

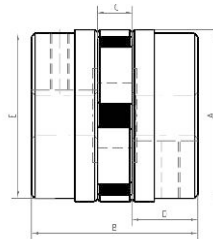


- Good temperature and oil resistance
- Free of maintenance
- Simple structure and easy to install
- The rubbers can be individually replaced when they are worn
- Standard products are finished bore products needed

CL035-CL150



CL190-CL276



The couplings are made of GG 25 material. The surface is machined and zinc plated.

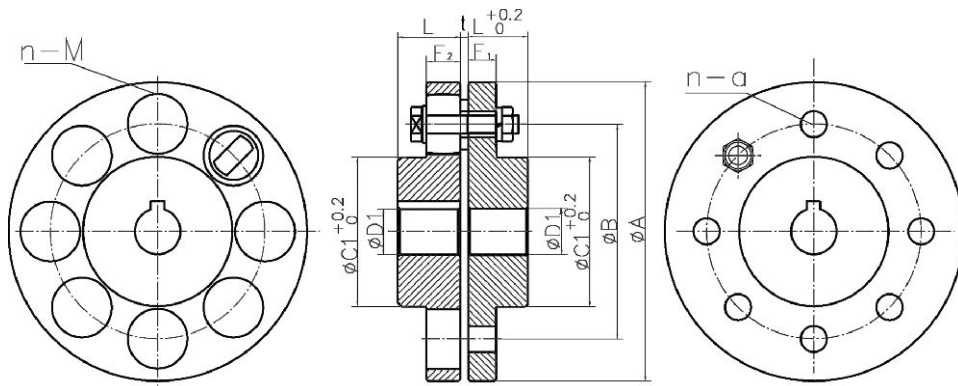
TYPE	Fundamental dimensions					Torgue needed kgm	Rotational speed r/om	Bore max mm	Stock bore sizes of the couplings	Mass kg
	A	B	C	D	E					
CL 035	16	21	8	6.5	-	0.05	30.000	9	8	0.03
CL 050	28	45	12	15.5	-	0.3	17.000	16	10. 12. 14. 16	0.13
CL 070	35	51	13	19	-	0.5	13.000	19	10. 12. 14. 16. 18. 19	0.24
CL 075	45	55	13	20.5	-	1.0	10.000	24	12. 14. 16. 18. 19. 20.22.24	0.40
CL 090	54	55	13	21	-	1.6	9.000	25	14. 16. 18. 19. 20.22.24. 25	0.68
CL 095	54	64	13	25.5	-	2.2	9.000	29	14. 16. 18. 19. 20.22.24. 25. 28	0.71
CL 099	65	73	19	27	-	4.5	7.000	35	20.22.24. 25. 28. 30. 32. 35	1.22
CL 100	65	89	19	35	-	5.0	7.000	35	20.22.24. 25. 28. 30. 32. 35	1.40
CL 110	84	108	22	43	-	9.0	5.000	42	25. 28. 30. 32. 35.38. 40. 42	3.0
CL 150	96	115	25	45	80	15.0	5.000	48	30. 32. 35.38. 40. 42. 45. 48	5.0
CL 190	115	134	25	54	102	20.0	5.000	54	35.38. 40. 42. 45. 48. 50	7.6
CL 225	127	154	26	64	108	30.0	4.000	67	38. 40. 42. 45. 48. 50. 55. 60. 65	9.0
CL 276	157	200	41	79	127	54.2	4.000	73	45. 48. 50. 55. 60. 65. 70	21.0

Keyway dimensions conform to DIN6885, JIS B 1310-1976, UNI6604-1969, GB1095-1979 standards.



GOODWILL

EL-Coupling



Special notice

Special Notice:EL-coupling or ELS-coupling should be done dynamic balance according to the degree Q6.3 when rotational speed reaches 1 / 2 of its limit while using

Material can be GG25 and S45C
After surface is machined and phosphated,
they are with high precision and are
durable in use.

Material:GG25

TYPE	Fundamental dimensions							Bore				Max Torque (N.m)	Max Revolution (r/Pm)	Number of Bolts (n)	Mass kg	
	A	L	B	a	M	t	D		F		Pilot Bore					Max Bore
							D1	D2	F1	F2						
EL 90	90	28	60	8	19	3	36	14	-	20	15	4000	4	1.37		
EL 100	100	36	67	10	23	3	43	16	-	25	63	4000	4	2.00		
EL 112	112	40	75	10	23	3	50	16	-	28	90	4000	4	2.64		
EL 125	125	45	85	14	32	3	56	50	15	-	28	130	4	3.59		
EL 140	140	50	100	140	32	3	71	63	18	-	35	220	6	4.88		
EL 160	160	56	115	14	32	3	80	18	-	45	360	4000	8	6.70		
EL 180	180	63	132	14	32	3	90	18	-	50	500	3500	8	8.98		
EL 200	200	71	145	20	41	3	100	23	18	56	440	3200	8	13.9		
EL 224	224	80	170	20	41	4	112	23	18	63	510	2850	8	18.3		
EL 250	250	90	180	25	51	4	125	28	20	71	850	2550	8	26.6		
EL 280	280	100	200	28	57	4	140	28	40	30	80	1500	8	37.4		
EL 315	315	112	236	28	57	4	160	28	40	32	90	2200	10	50.3		
EL 355	355	125	260	36	75	5	180	36	56	32	100	3500	8	79.2		
EL 400	400	125	300	36	72	5	200	36	56	50	110	5000	10	100		
EL 450	450	140	355	36	72	5	224	36	56	60	125	7100	12	132		
EL 560	560	160	450	36	72	5	250	36	56	80	140	10000	14	207		
EL 630	630	180	530	36	72	5	280	36	56	90	160	16000	18	271		
EL 710	710	224	600	36	72	5	315	56	110	180	25000	900	24	425		
EL 711	710	250	580	45	87	7	355	80	120	200	3400	900	20	588		
EL 800	800	265	670	45	87	7	325	80	130	210	45000	800	22	745		

Keyway dimensions conform to DIN6885, JIS B 1310-1976, UNI6604-1969, GB1095-1979 standards.