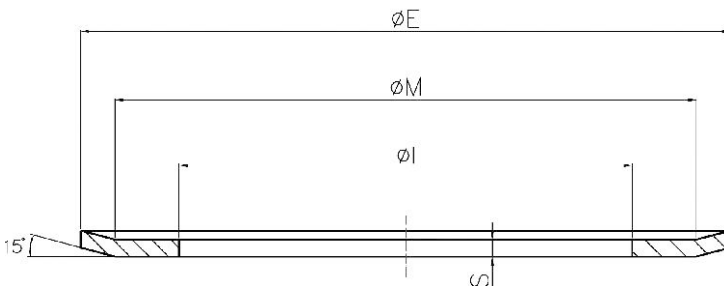


TYPE OF FLANGE

| TEETH | XL SP.1 | L SP.1,5 | H SP.1,5 | XH SP.2,5 | HTD 3M SP.0,5 | HTD 5M SP.1 | HTD 8M SP.1,5 | HTD 14M SP.2,5 | T 2,5 SP.2,5 | T 5 SP.0,5 | T 10 SP.1 | BAT 5 SP.1 | BAT 10 SP.1 |
|-------|------------|-------------|-------------|--------------|------------------|----------------|------------------|-------------------|-----------------|---------------|--------------|---------------|----------------|
| 10 | 201 | 300 | | | 100 | | | | | 200 | | | |
| 11 | 201 | 301 | | | | | | | | | | | |
| 12 | 203 | 302 | | | 101 | 202 | | | 100 | 201 | 208 | 201 | 208 |
| 13 | 203 | 303 | | | | | | | | | | | |
| 14 | 204 | 304 | 309 | | 102 | 203 | | | 101 | 203 | 210 | 203 | 210 |
| 15 | 204 | 305 | 310 | | 104 | 204 | | | 101 | 204 | 211 | 204 | 211 |
| 16 | 205 | 306 | 311 | | 104 | 204 | | | 102 | 205 | 212 | 205 | 212 |
| 17 | 205 | 307 | 312 | | | | | | | | | | |
| 18 | 206 | 308 | 313 | 401 | 105 | 205 | | | 104 | 205 | 214 | 205 | 214 |
| 19 | 206 | 309 | 314 | 402 | | | | | 104 | 206 | 216 | 206 | 216 |
| 20 | 207 | 310 | 315 | 403 | 107 | 206 | | | 105 | 206 | 216 | 206 | 216 |
| 21 | 207 | 311 | 316 | 404 | 108 | 207 | | | | | | | |
| 22 | 208 | 312 | 317 | 405 | 108 | 207 | 308 | | 106 | 207 | 218 | 207 | 218 |
| 23 | | 313 | 318 | | | | | | | | | | |
| 24 | 209 | 313 | 320 | 406 | 108 | 208 | 310 | | 107 | 208 | 219 | 208 | 219 |
| 25 | | 314 | 321 | 407 | | | | | 107 | 209 | 219 | 209 | 219 |
| 26 | 210 | 315 | 322 | 409 | 109 | 209 | 311 | | 108 | 209 | 220 | 209 | 220 |
| 27 | 210 | 315 | 323 | 410 | | | | | | 210 | 221 | 210 | 221 |
| 28 | 211 | 316 | 325 | 411 | 110 | 210 | 312 | 400 | 108 | 210 | 222 | 210 | 222 |
| 29 | | | 326 | | | | | | | | | | |
| 30 | 212 | 318 | 327 | 412 | 110 | 211 | 314 | 401 | 109 | 211 | 223 | 211 | 223 |
| 32 | 213 | 320 | 328 | 414 | 111 | 212 | 315 | 403 | 110 | 212 | 224 | 212 | 224 |
| 33 | | 321 | 330 | | | | | | | | | | |
| 34 | 214 | 322 | 331 | 415 | | 213 | 316 | 404 | | | | | |
| 35 | 215 | 322 | 333 | | | | | | | | | | |
| 36 | | 323 | 334 | | 112 | 214 | 319 | 405 | 111 | 215 | 225 | 215 | 225 |
| 38 | | | 335 | | | 216 | 320 | 406 | | | | | |
| 40 | | 327 | 338 | | 113 | 217 | 321 | 407 | 112 | 216 | 226 | 216 | 226 |
| 42 | | 328 | | | | | | | | 217 | | 217 | |
| 44 | | 330 | 339 | | 114 | 218 | 325 | 411 | | | | | |
| 45 | | 331 | 340 | | | | | | | | | | |
| 48 | | 334 | 342 | | | 219 | 327 | 412 | | | | | |
| 52 | | | | | | | | | | | | | |
| 56 | | | | | | 222 | 333 | 416 | | | | | |
| 60 | | | | | | | | | | | | | |
| 64 | | | | | | 224 | 338 | 418 | | | | | |
| 68 | | | | | | | | | | | | | |
| 72 | | | | | | 225 | 340 | | | | | | |
| 80 | | | | | | | | | | | | | |
| 90 | | | | | | | | | | | | | |

Flanges

We can also supply the flanges of the above timing belt pulleys separately. The customers can order flanges according to the corresponding pulleys part numbers.



| TYPE OF FLANGE | S=0,5 mm | | | TYPE OF FLANGE | S=1mm | | | TYPE OF FLANGE | S=1,5 mm | | | TYPE OF FLANGE | S=2,5 mm | | |
|----------------|----------|------|------|----------------|-------|-------|-------|----------------|----------|-------|-------|----------------|----------|-------|-------|
| | ø E | ø M | ø i | | ø E | ø M | ø i | | ø E | ø M | ø i | | ø E | ø M | ø i |
| 100 | 13 | 10 | 6 | 200 | 19.5 | 17.5 | 12.5 | 300 | 36 | 31 | 25 | 400 | 127 | 120.2 | 104.7 |
| 101 | 15 | 12 | 8 | 201 | 23 | 17.5 | 12.5 | 301 | 38 | 34 | 28 | 401 | 138 | 130 | 108 |
| 102 | 16 | 13 | 9,5 | 202 | 23 | 20 | 14 | 302 | 42 | 38 | 30.5 | 402 | 146 | 138 | 116 |
| 104 | 18 | 15 | 10 | 203 | 25 | 22 | 15 | 303 | 44 | 40 | 33 | 403 | 154 | 146 | 122 |
| 105 | 19,5 | 17,5 | 12 | 204 | 28 | 24 | 18 | 304 | 48 | 43.5 | 37 | 404 | 160 | 150 | 128 |
| 106 | 23 | 17,5 | 12,5 | 205 | 32 | 28 | 21.5 | 305 | 51 | 47.5 | 40 | 405 | 168 | 162 | 135 |
| 107 | 23 | 20 | 14 | 206 | 36 | 31 | 25 | 306 | 54 | 50.5 | 43 | 406 | 183 | 170 | 145 |
| 108 | 25 | 22 | 15 | 207 | 38 | 34 | 28 | 307 | 57 | 53 | 46 | 407 | 188 | 180 | 158 |
| 109 | 28 | 24 | 18 | 208 | 42 | 38 | 30.5 | 308 | 60 | 57 | 47 | 409 | 198 | 188 | 165 |
| 110 | 32 | 28 | 21,5 | 209 | 44 | 40 | 33 | 309 | 63 | 57 | 48 | 410 | 200 | 192.8 | 172 |
| 111 | 36 | 31 | 25 | 210 | 48 | 43.5 | 37 | 310 | 66 | 61.5 | 52 | 411 | 211 | 198 | 173 |
| 112 | 38 | 34 | 28 | 211 | 51 | 47.5 | 40 | 311 | 71 | 65 | 56 | 412 | 226 | 214 | 190 |
| 113 | 42 | 38 | 30,5 | 212 | 54 | 50.5 | 43 | 312 | 75 | 68.5 | 60 | 414 | 240 | 224 | 192 |
| 114 | 48 | 43,5 | 37 | 213 | 57 | 53 | 46 | 313 | 79 | 73.5 | 64 | 415 | 256 | 240 | 220 |
| | | | | 214 | 60 | 57 | 47 | 314 | 83 | 76.5 | 68 | 416 | 256 | 247 | 225 |
| | | | | 215 | 63 | 57 | 48 | 315 | 87 | 82.5 | 72 | 418 | 296 | 287 | 252 |
| | | | | 216 | 66 | 61.5 | 52 | 316 | 91 | 85.5 | 76 | | | | |
| | | | | 217 | 71 | 65 | 56 | 317 | 93 | 89 | 80 | | | | |
| | | | | 218 | 75 | 68.5 | 60 | 318 | 97 | 93 | 83 | | | | |
| | | | | 219 | 83 | 76.5 | 68 | 319 | 98 | 92 | 79.3 | | | | |
| | | | | 220 | 87 | 82.5 | 72 | 320 | 103 | 97 | 86 | | | | |
| | | | | 221 | 91 | 85.5 | 76 | 321 | 106 | 101 | 90 | | | | |
| | | | | 222 | 93 | 89 | 80 | 322 | 111 | 106 | 94 | | | | |
| | | | | 223 | 97 | 93 | 83 | 323 | 115 | 110 | 99 | | | | |
| | | | | 224 | 106 | 101 | 90 | 325 | 119 | 113.5 | 102.5 | | | | |
| | | | | 225 | 119 | 113.5 | 102.5 | 326 | 123 | 117.5 | 107 | | | | |
| | | | | 226 | 131 | 125.5 | 115 | 327 | 127 | 122 | 111 | | | | |
| | | | | | | | | 328 | 135 | 130 | 119 | | | | |
| | | | | | | | | 330 | 140 | 134.5 | 123 | | | | |
| | | | | | | | | 331 | 143 | 139 | 127 | | | | |
| | | | | | | | | 333 | 148 | 143 | 132 | | | | |
| | | | | | | | | 334 | 152 | 147.5 | 136 | | | | |
| | | | | | | | | 335 | 158 | 154 | 142 | | | | |
| | | | | | | | | 338 | 168 | 163 | 149.5 | | | | |
| | | | | | | | | 339 | 184 | 179 | 165 | | | | |
| | | | | | | | | 340 | 192 | 189 | 177 | | | | |
| | | | | | | | | 342 | 200 | 195 | 181 | | | | |